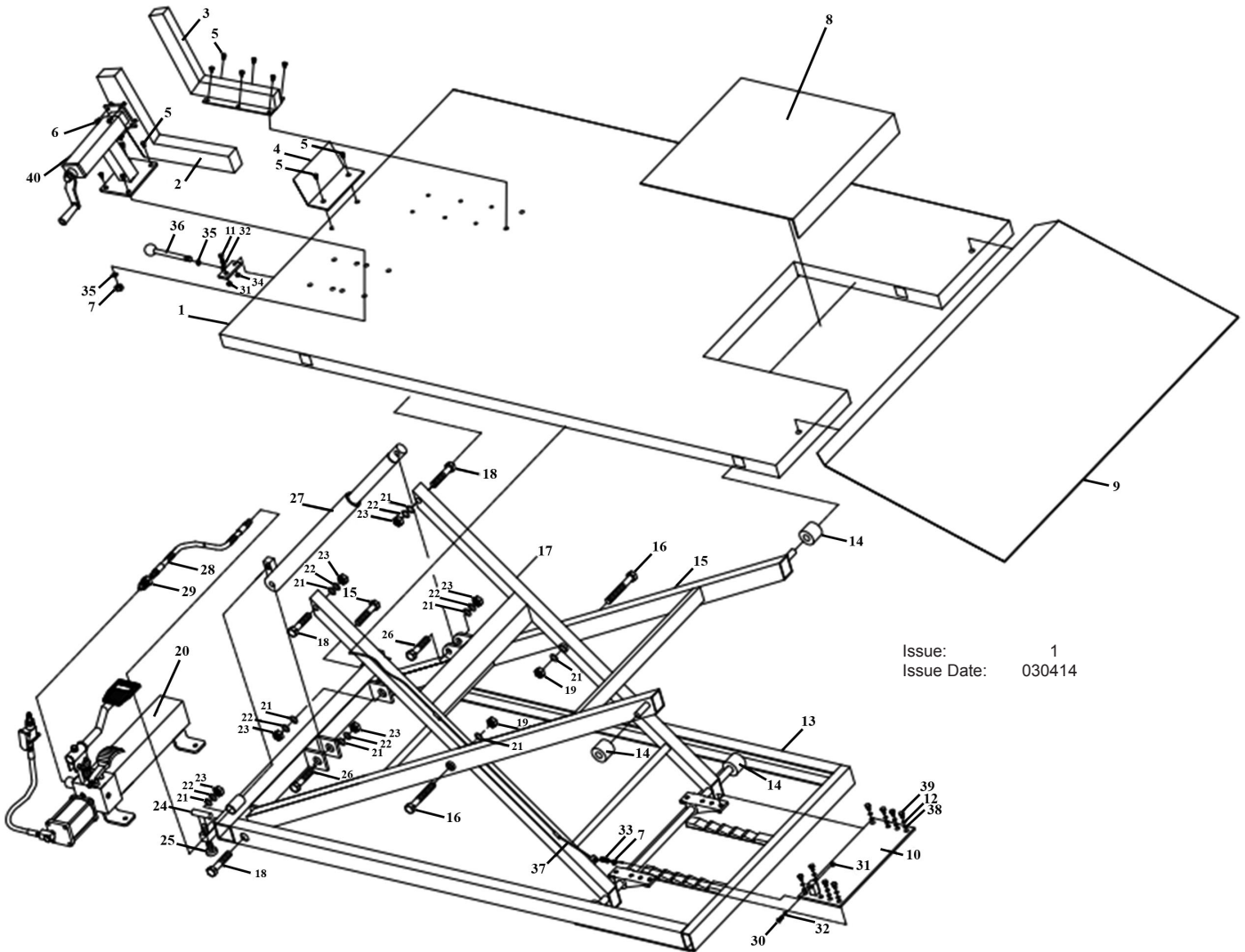




PARTS FOR:  
**MOTORCYCLE LIFT 680kg CAPACITY HEAVY-DUTY  
 AIR/HYDRAULIC  
 MODEL: MC680A**



Issue: 1  
 Issue Date: 030414

ITEM	PART NO	DESCRIPTION	ITEM	PART NO	DESCRIPTION	ITEM	PART NO	DESCRIPTION
1	MC680A.01	PLATFORM	15	MC680A.15	LIFTING ARM (OUTER)	29	MC680A.29	HOSE CONNECTOR
2	MC680A.02	MOVABLE VICE JAW	16	MC680A.16	BOLT	30	MC680A.30	BOLT
3	MC680A.03	FIXED VICE JAW	17	MC680A.17	LIFTING ARM (INNER)	31	MC680A.31	LOCK NUT
4	MC680A.04	STOP PLATE	18	MC680A.18	BOLT	32	MC680A.32	WASHER
5	MC680A.05	BOLT	19	MC680A.19	LOCK NUT	33	MC680A.33	BOLT
6	MC680A.06	BOLT	20	MC680A.20	AIR/MANUAL PUMP	34	MC680A.34	LOCK NUT
7	MC680A.07	NUT	21	MC680A.21	WASHER	35	MC680A.35	NUT
8	MC680A.08	SLIDING PLATE	22	MC680A.22	LOCK WASHER	36	MC680A.36	SAFETY HANDLE
9	MC680A.09	LEADING PLATE	23	MC680A.23	NUT	37	MC680A.37	SAFETY WIRE
10	MC680A.10	SAFETY PLATE ASS'Y	24	MC680A.24	ADJUSTING SCREW	38	MC680A.38	WASHER
11	MC680A.11	BOLT	25	MC680A.25	ROTATABLE FOOT	39	MC680A.39	BOLT
12	MC680A.12	LOCK WASHER	26	MC680A.26	BOLT	40	MC680A.40	FIXED VICE JAW
13	MC680A.13	BASE ASS'Y	27	MC680A.27	RAM			
14	MC680A.14	STEEL WHEEL	28	MC680A.28	HYDRAULIC HOSE			

**NOTE:** It is our policy to continually improve products and as such we reserve the right to alter data, specifications and component parts without prior notice.

**IMPORTANT:** No liability is accepted for incorrect use of product.

**WARRANTY:** Guarantee is 12 months from purchase date, proof of which will be required for any claim.

**INFORMATION:** For a copy of our latest catalogue and promotions call us on 01284 757525 and leave your full name and address, including postcode.



Sole UK Distributor,  
 Sealey Group, Kempson Way,  
 Suffolk Business Park,  
 Bury St Edmunds, Suffolk, IP32 7AR



01284 757500



01284 703534



[www.sealey.co.uk](http://www.sealey.co.uk)



[sales@sealey.co.uk](mailto:sales@sealey.co.uk)